

# FLUTE SCALES

O = COVER RIGHT HAND

B Major

C Major

(#D) (bE) (bE)

C Major

#C Major

D Major

(#D) (bE) (bE)

D Major

(D) (D)

bE Major

E Major

(#D) (#D)

F Major

# Flute Scales

**b G Major**  
0  
(b E)

**F Major**  
(b E)

**G Major**

**b A Major**  
0  
(b E)

**A Major**  
0  
(D)

**b B Major**

**Chromatic Scale**  
0  
(D)

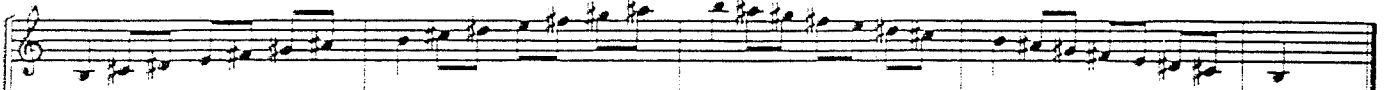
0  
(D)

# OBOE SCALES

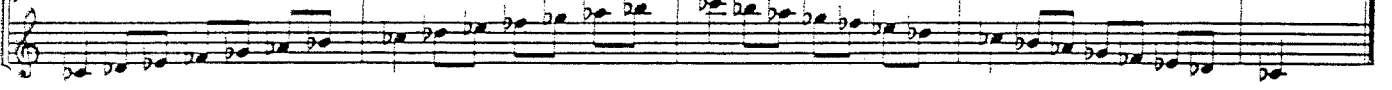
B $\flat$  Major



B Major



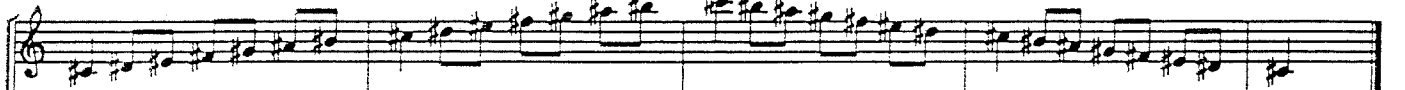
C Major



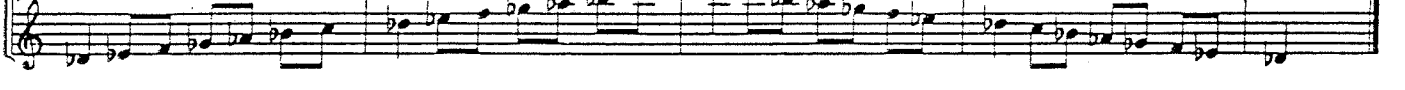
C Major



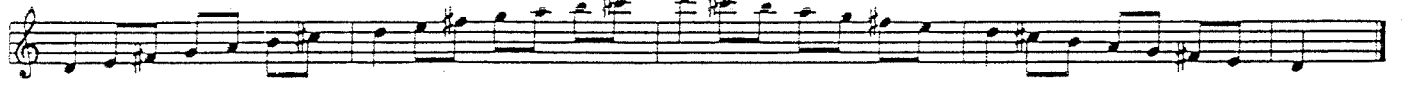
D Major



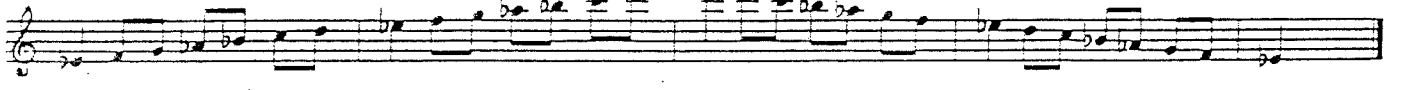
D Major



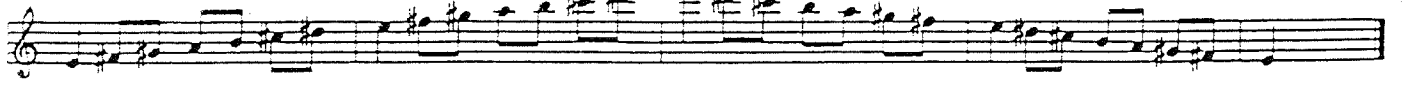
D Major



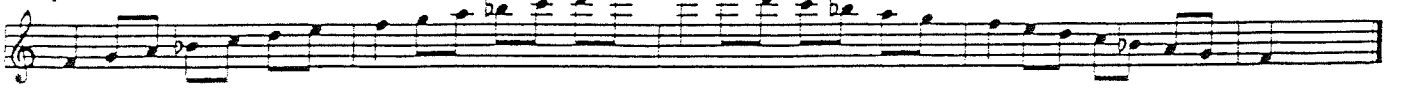
E Major



E Major



F Major



# Oboe Scales

F# Major

Musical notation for the F# Major scale, consisting of two staves. The top staff shows the ascending scale (F#4, G4, A4, B4, C#5, D5, E5, F#5) and the bottom staff shows the descending scale (F#5, E5, D5, C#5, B4, A4, G4, F#4).

b G Major

Musical notation for the b G Major scale, consisting of two staves. The top staff shows the ascending scale (G4, A4, B4, C5, D5, E5, F#5, G5) and the bottom staff shows the descending scale (G5, F#5, E5, D5, C5, B4, A4, G4).

G Major

Musical notation for the G Major scale, consisting of two staves. The top staff shows the ascending scale (G4, A4, B4, C5, D5, E5, F#5, G5) and the bottom staff shows the descending scale (G5, F#5, E5, D5, C5, B4, A4, G4).

b A Major

Musical notation for the b A Major scale, consisting of two staves. The top staff shows the ascending scale (A4, B4, C5, D5, E5, F#5, G5, A5) and the bottom staff shows the descending scale (A5, G5, F#5, E5, D5, C5, B4, A4).

A Major

Musical notation for the A Major scale, consisting of two staves. The top staff shows the ascending scale (A4, B4, C#5, D5, E5, F#5, G5, A5) and the bottom staff shows the descending scale (A5, G5, F#5, E5, D5, C#5, B4, A4).

Chromatic Scale

Musical notation for the ascending chromatic scale, consisting of two staves. The top staff shows the ascending scale (F#4, G4, A4, B4, C#5, D5, E5, F#5, G5, A5) and the bottom staff shows the descending scale (A5, G5, F#5, E5, D5, C#5, B4, A4, G4, F#4).

Musical notation for the descending chromatic scale, consisting of two staves. The top staff shows the descending scale (A5, G5, F#5, E5, D5, C#5, B4, A4, G4, F#4) and the bottom staff shows the ascending scale (F#4, G4, A4, B4, C#5, D5, E5, F#5, G5, A5).

Musical notation for the ascending chromatic scale, consisting of two staves. The top staff shows the ascending scale (F#4, G4, A4, B4, C#5, D5, E5, F#5, G5, A5) and the bottom staff shows the descending scale (A5, G5, F#5, E5, D5, C#5, B4, A4, G4, F#4).

# CLARINET SCALES

O = COVER WITH RIGHT HAND & \* = USE CHROMATIC FINGERING

E Major

Musical notation for the E Major scale. The scale is written on a single staff in treble clef. It begins with a whole note 'O' (cover with right hand) above the staff. The scale consists of 14 notes: E, F#, G, A, B, C#, D, E, D, C#, B, A, G, F#, E. A circled 'B' is placed below the B note. A horizontal line is drawn above the staff from the E note to the G note.

F Major

Musical notation for the F Major scale. The scale is written on a single staff in treble clef. It begins with a whole note 'O' (cover with right hand) above the staff. The scale consists of 14 notes: F, G, A, Bb, C, D, E, F, E, D, C, Bb, A, G, F. A circled 'C' is placed below the C note. A horizontal line is drawn above the staff from the F note to the A note.

# F Major

Musical notation for the #F Major and bB Major scales. The scales are written on two staves in treble clef. The top staff is for #F Major and the bottom staff is for bB Major. Both scales begin with a whole note 'O' (cover with right hand) above the top staff. The #F Major scale consists of 14 notes: #F, G, A, B, C#, D, E, #F, E, D, C#, B, A, G, #F. The bB Major scale consists of 14 notes: bB, Bb, C, D, Eb, F, G, bB, G, F, Eb, D, C, Bb, bB. A circled 'B' is placed below the B note in the #F Major scale, and a circled 'bC' is placed below the bC note in the bB Major scale. A horizontal line is drawn above the top staff from the #F note to the A note.

G Major

Musical notation for the G Major scale. The scale is written on a single staff in treble clef. It begins with a whole note 'O' (cover with right hand) above the staff. The scale consists of 14 notes: G, A, B, C, D, E, F#, G, F#, E, D, C, B, A, G. A circled 'B' is placed below the B note. A horizontal line is drawn above the staff from the G note to the B note.

b A Major

Musical notation for the bA Major scale. The scale is written on a single staff in treble clef. It begins with a whole note 'O' (cover with right hand) above the staff. The scale consists of 14 notes: bA, Bb, C, D, Eb, F, G, bA, G, F, Eb, D, C, Bb, bA. A circled 'C' is placed below the C note. A horizontal line is drawn above the staff from the bA note to the C note.

A Major

Musical notation for the A Major scale. The scale is written on a single staff in treble clef. It begins with a whole note 'O' (cover with right hand) above the staff. The scale consists of 14 notes: A, B, C#, D, E, F#, G, A, G, F#, E, D, C#, B, A. A circled 'B' is placed below the B note. A horizontal line is drawn above the staff from the A note to the C# note.

b B Major

Musical notation for the bB Major scale. The scale is written on a single staff in treble clef. It begins with a whole note 'O' (cover with right hand) above the staff. The scale consists of 14 notes: bB, Bb, C, D, Eb, F, G, bB, G, F, Eb, D, C, Bb, bB. A circled 'C' is placed below the C note. A horizontal line is drawn above the staff from the bB note to the C note.

B Major

Musical notation for the B Major scale. The scale is written on a single staff in treble clef. It begins with a whole note 'O' (cover with right hand) above the staff. The scale consists of 14 notes: B, C#, D, E, F#, G, A, B, A, G, F#, E, D, C#, B. A circled 'B' is placed below the B note. A horizontal line is drawn above the staff from the B note to the D note.

b C Major

Musical notation for the bC Major scale. The scale is written on two staves in treble clef. The top staff is for #F Major and the bottom staff is for bC Major. Both scales begin with a whole note 'O' (cover with right hand) above the top staff. The #F Major scale consists of 14 notes: #F, G, A, B, C#, D, E, #F, E, D, C#, B, A, G, #F. The bC Major scale consists of 14 notes: bC, C, D, Eb, F, G, Ab, bC, Bb, Ab, G, F, Eb, D, C, bC. A circled 'bC' is placed below the bC note in the bC Major scale. A horizontal line is drawn above the top staff from the #F note to the A note.

# Clarinet Scales

C Major

0 -

(B)

# C Major

x 0 -

(#B)

b D Major

x 0 -

(C)

D Major

0 -

(B)

b E Major

0 -

(C)

Chromatic

\* 0 -

(B) R L

\* 0 -

(B) R L

R L \* R L

(B) R L

Clarinet Overtones

Keep bE Key down

# SAXOPHONE SCALES

O = COVER WITH RIGHT HAND & \* = USE CHROMATIC FINGERING

$\flat$  B Major



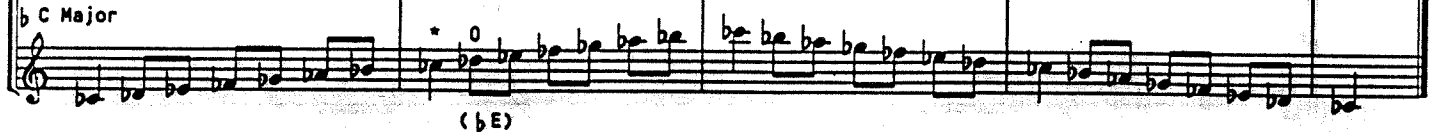
Musical notation for the B-flat Major scale, consisting of a single staff with a treble clef and a key signature of two flats. The scale is written in a single line, starting on B-flat and ending on B-flat.

B Major



Musical notation for the B Major scale, consisting of a single staff with a treble clef and a key signature of two sharps. The scale is written in a single line, starting on B and ending on B. A circled '0' and '(#D)' are placed above the second measure.

$\flat$  C Major



Musical notation for the C-flat Major scale, consisting of a single staff with a treble clef and a key signature of three flats. The scale is written in a single line, starting on C-flat and ending on C-flat. A circled '0' and '(bE)' are placed above the second measure.

C Major



Musical notation for the C Major scale, consisting of a single staff with a treble clef and a key signature of no sharps or flats. The scale is written in a single line, starting on C and ending on C.

$\sharp$  C Major



Musical notation for the C-sharp Major scale, consisting of a single staff with a treble clef and a key signature of one sharp. The scale is written in a single line, starting on C-sharp and ending on C-sharp. A circled '0' and '(#D)' are placed above the second measure.

$\flat$  D Major



Musical notation for the D-flat Major scale, consisting of a single staff with a treble clef and a key signature of two flats. The scale is written in a single line, starting on D-flat and ending on D-flat. A circled '0' and '(bE)' are placed above the second measure.

D Major



Musical notation for the D Major scale, consisting of a single staff with a treble clef and a key signature of two sharps. The scale is written in a single line, starting on D and ending on D. A circled '0' and '(D)' are placed above the second measure.

$\flat$  E Major



Musical notation for the E-flat Major scale, consisting of a single staff with a treble clef and a key signature of three flats. The scale is written in a single line, starting on E-flat and ending on E-flat.

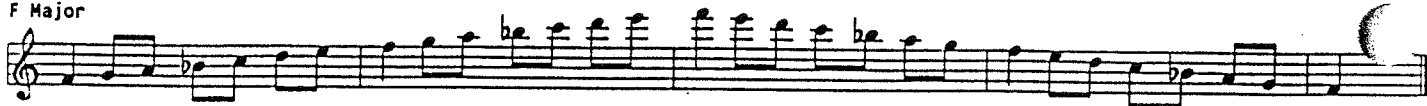
E Major



Musical notation for the E Major scale, consisting of a single staff with a treble clef and a key signature of one sharp. The scale is written in a single line, starting on E and ending on E. A circled '0' and '(#D)' are placed above the second measure.

# Saxophone Scales

F Major



Musical notation for the F Major scale, consisting of a single staff with a treble clef. The scale is written in a single line, starting on F4 and ending on F5. The notes are: F, G, A, Bb, C, D, E, F, G, A, Bb, C, D, E, F. There are some additional notes and accidentals at the end of the scale.

# F Major



Musical notation for the #F Major and bG Major scales, consisting of two staves with a treble clef. The top staff is for #F Major and the bottom staff is for bG Major. Both scales are written in a single line, starting on the respective tonic and ending on the tonic an octave higher. The #F Major scale notes are: #F, G, A, B, C, D, E, #F, G, A, B, C, D, E, #F. The bG Major scale notes are: bG, A, B, C, D, E, F, bG, A, B, C, D, E, F, bG. There are some additional notes and accidentals at the end of the scales.

G Major



Musical notation for the G Major scale, consisting of a single staff with a treble clef. The scale is written in a single line, starting on G4 and ending on G5. The notes are: G, A, B, C, D, E, F#, G, A, B, C, D, E, F#, G.

b A Major



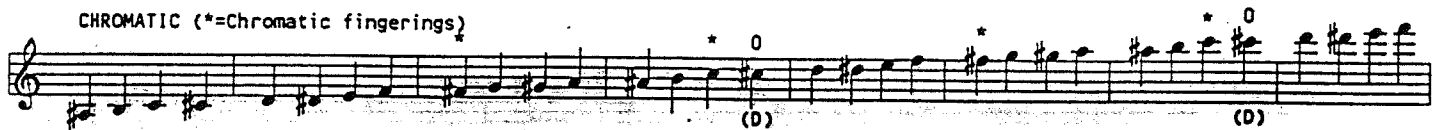
Musical notation for the bA Major scale, consisting of a single staff with a treble clef. The scale is written in a single line, starting on bA4 and ending on bA5. The notes are: bA, B, C, D, E, F, G, bA, B, C, D, E, F, G, bA.

A Major

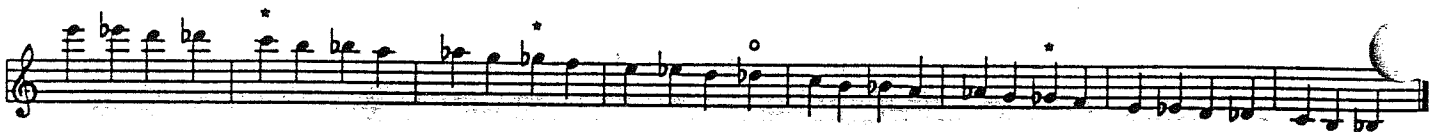


Musical notation for the A Major scale, consisting of a single staff with a treble clef. The scale is written in a single line, starting on A4 and ending on A5. The notes are: A, B, C, D, E, F#, G, A, B, C, D, E, F#, G, A.

CHROMATIC (\*=Chromatic fingerings)



Musical notation for a chromatic scale, consisting of a single staff with a treble clef. The scale is written in a single line, starting on D4 and ending on D5. The notes are: D, Eb, E, F, F#, G, G#, A, Ab, A, B, Bb, B, C, C#, D. There are some additional notes and accidentals at the end of the scale.



Musical notation for a chromatic scale, consisting of a single staff with a treble clef. The scale is written in a single line, starting on D4 and ending on D5. The notes are: D, Eb, E, F, F#, G, G#, A, Ab, A, B, Bb, B, C, C#, D. There are some additional notes and accidentals at the end of the scale.



# FRENCH HORN SCALES

## LEVEL ONE

F Major



# F Major



G Major



b A Major



A Major



b B Major



B Major



b C Major



C Major



French Horn Scales

# C Major



Musical staff for # C Major scale, showing ascending and descending eighth notes with sharps for F# and C#.

b D Major



Musical staff for b D Major scale, showing ascending and descending eighth notes with flats for Bb and F.

D Major



Musical staff for D Major scale, showing ascending and descending eighth notes with a sharp for F#.

b E Major



Musical staff for b E Major scale, showing ascending and descending eighth notes with flats for Bb and F.

E Major



Musical staff for E Major scale, showing ascending and descending eighth notes with sharps for F# and C#.

Chromatic



Musical staff for Chromatic scale, showing ascending and descending eighth notes with all accidentals.



Musical staff for Chromatic scale, showing ascending and descending eighth notes with all accidentals.

Lip Slurs(Chords)



Musical staff for Lip Slurs(Chords) exercise 1, showing a sequence of chords with fingerings 0, 2, and 1 indicated below.



Musical staff for Lip Slurs(Chords) exercise 2, showing a sequence of chords with fingerings 12 and 23 indicated below.



Musical staff for Lip Slurs(Chords) exercise 3, showing a sequence of chords with fingerings 13 and 123 indicated below.

# CORNET SCALES

# F Major

Musical notation for F Major and Bb Major scales. The F Major scale is written on a treble clef staff, and the Bb Major scale is written on a bass clef staff. Both scales are in 2/4 time and consist of eight measures.

G Major

Musical notation for G Major scale, written on a treble clef staff in 2/4 time, consisting of eight measures.

b A Major

Musical notation for Ab Major scale, written on a treble clef staff in 2/4 time, consisting of eight measures.

A Major

Musical notation for A Major scale, written on a treble clef staff in 2/4 time, consisting of eight measures.

b B Major

Musical notation for Bb Major scale, written on a treble clef staff in 2/4 time, consisting of eight measures.

B Major

Musical notation for B Major and Cb Major scales. The B Major scale is written on a treble clef staff, and the Cb Major scale is written on a bass clef staff. Both scales are in 2/4 time and consist of eight measures.

C Major

Musical notation for C Major scale, written on a treble clef staff in 2/4 time, consisting of eight measures.

# C Major

Musical notation for C# Major and Db Major scales. The C# Major scale is written on a treble clef staff, and the Db Major scale is written on a bass clef staff. Both scales are in 2/4 time and consist of eight measures.

# Cornet Scales

D Major



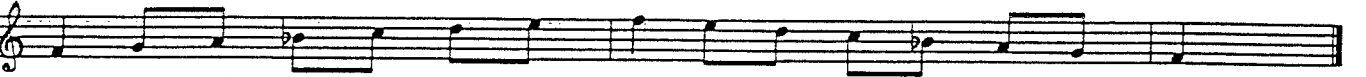
$\flat$  E Major



E Major



F Major



Chromatic



Lip Slurs #1



Lip Slurs #2



# TROMBONE SCALES

(Baritone Horn)

E Major



F Major



# F Major



b G Major



G Major



b A Major



A Major



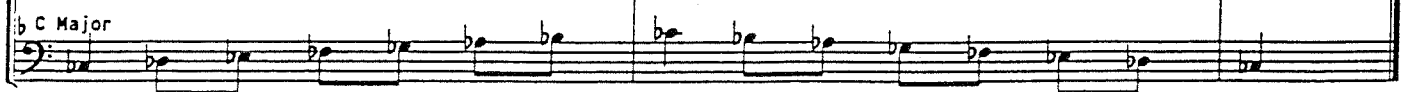
b B Major



B Major



b C Major



C Major



# Trombone/Baritone Horn - Scales

# C Major

Two staves of musical notation for the # C Major scale. The top staff is in bass clef with a key signature of one sharp (F#). The bottom staff is in bass clef with a key signature of two flats (Bb, Eb). Both staves show an ascending and descending scale pattern.

D Major

Single staff of musical notation for the D Major scale in bass clef with a key signature of two sharps (F#, C#).

b E Major

Single staff of musical notation for the b E Major scale in bass clef with a key signature of three flats (Bb, Eb, Ab).

Chromatic

Single staff of musical notation for the chromatic scale in bass clef, showing a sequence of half notes with various accidentals.

Single staff of musical notation for the chromatic scale in bass clef, showing a sequence of half notes with various accidentals.

Single staff of musical notation for the chromatic scale in bass clef, showing a sequence of half notes with various accidentals.

Lip Slurs #1

Single staff of musical notation for Lip Slurs #1 in bass clef, featuring slurred eighth notes with various accidentals.

1(0) - - - -- 2(2) - - - -- 3(1) - - - -- 4(12) - - - --

Single staff of musical notation for Lip Slurs #1 in bass clef, featuring slurred eighth notes with various accidentals.

5(23) - - - -- 6(13) - - - -- 7(123) - - - --

Lip Slurs #2

Single staff of musical notation for Lip Slurs #2 in bass clef, featuring slurred eighth notes with various accidentals.

1(0) - - - -- 2(2) - - - -- 3(1) - - - -- 4(12) - - - --

Single staff of musical notation for Lip Slurs #2 in bass clef, featuring slurred eighth notes with various accidentals.

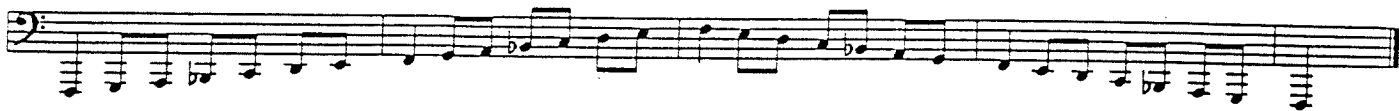
5(23) - - - -- 6(13) - - - -- 7(123) - - - --

# TUBA SCALES

E Major



F Major



# F Major

Musical notation for the #F Major and bG Major scales in bass clef, 4/4 time. The #F Major scale (top staff) consists of 14 notes: #F, G, A, B, C, D, E, #F, E, D, C, B, A, G, #F. The bG Major scale (bottom staff) consists of 14 notes: bG, A, B, C, D, E, F, bG, F, E, D, C, B, A, bG. The scales are written on two staves.

G Major



b A Major



A Major



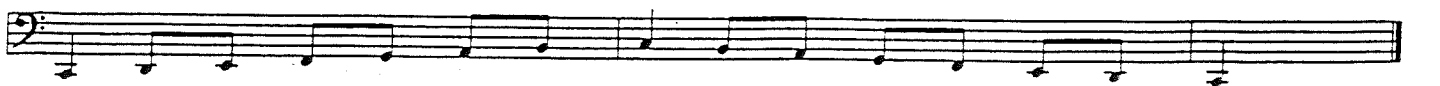
b B Major



B Major

Musical notation for the B Major and bC Major scales in bass clef, 4/4 time. The B Major scale (top staff) consists of 14 notes: B, C, D, E, F#, G, A, B, A, G, F#, E, D, C, B. The bC Major scale (bottom staff) consists of 14 notes: bC, D, E, F, G, A, B, bC, B, A, G, F, E, D, bC. The scales are written on two staves.

C Major



# Tuba Scales

# C Major

Two staves of musical notation for the # C Major scale. The top staff is in bass clef with a key signature of one sharp (F#). The bottom staff is in bass clef with a key signature of two flats (Bb, Eb). Both staves show an ascending and descending scale.

D Major

One staff of musical notation for the D Major scale in bass clef with a key signature of two sharps (F#, C#).

b E Major

One staff of musical notation for the b E Major scale in bass clef with a key signature of three flats (Bb, Eb, Ab).

Chromatic

First line of musical notation for the chromatic scale in bass clef, showing a sequence of half notes with accidentals.

Second line of musical notation for the chromatic scale in bass clef, continuing the sequence of half notes with accidentals.

Third line of musical notation for the chromatic scale in bass clef, continuing the sequence of half notes with accidentals.

Lip Slurs #1

First line of musical notation for Lip Slurs #1 in bass clef, featuring slurs over groups of notes. Fingerings 0, 2, 1, 1 are indicated below the notes.

Second line of musical notation for Lip Slurs #1 in bass clef, featuring slurs over groups of notes. Fingerings 23, 13, 123 are indicated below the notes.

Lip Slurs #2

First line of musical notation for Lip Slurs #2 in bass clef, featuring slurs over groups of notes. Fingerings 0, 2, 1, 12 are indicated below the notes.

Second line of musical notation for Lip Slurs #2 in bass clef, featuring slurs over groups of notes. Fingerings 23, 13, 123 are indicated below the notes.